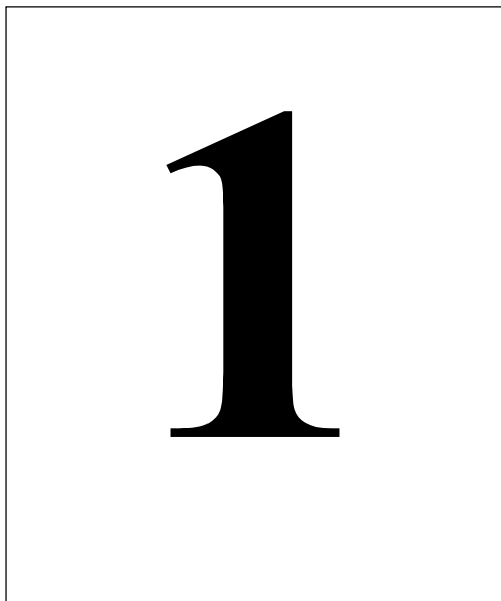


4739 :: Organist Score :: Jeff Ostrowski (2008)

<http://www.corpuschristiwatershed.org/>



My soul YEARNs and pines for the courts of the Lord.

Musical notation for the first line of the organ score. It consists of two staves: a treble clef staff and a bass clef staff. The treble staff contains a melody of quarter notes: G4, A4, B4, C5, B4, A4, G4. The bass staff contains a accompaniment of quarter notes: G3, B2, C3, D3, E3, F3, G3. The piece is in 4/4 time and begins with a key signature of one flat (Bb).

My heart and MY flesh cry out for the liv-ing God.

Musical notation for the second line of the organ score. It consists of two staves: a treble clef staff and a bass clef staff. The treble staff contains a melody of quarter notes: G4, A4, B4, C5, B4, A4, G4. The bass staff contains a accompaniment of quarter notes: G3, B2, C3, D3, E3, F3, G3. The piece is in 4/4 time and begins with a key signature of one flat (Bb).

Ev - en the spar - row finds a home, and the swal - low a nest in which she PUTS her young—

Musical notation for the third line of the organ score. It consists of two staves: a treble clef staff and a bass clef staff. The treble staff contains a melody of quarter notes: G4, A4, B4, C5, B4, A4, G4. The bass staff contains a accompaniment of quarter notes: G3, B2, C3, D3, E3, F3, G3. The piece is in 4/4 time and begins with a key signature of one flat (Bb).

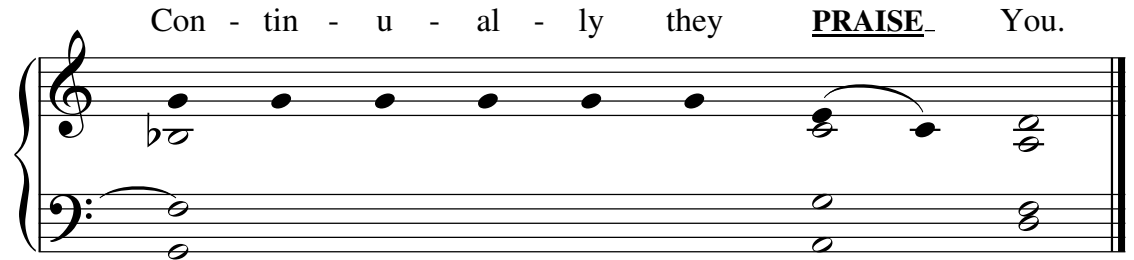
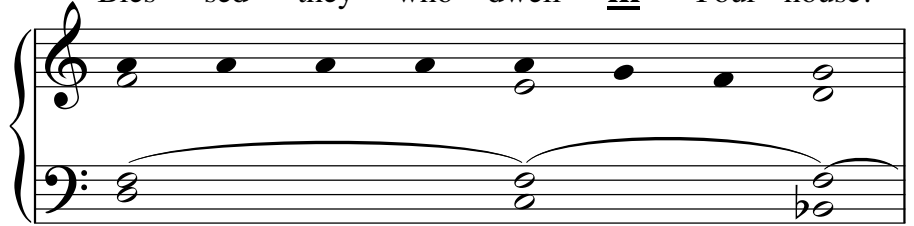
Your al - tars, O Lord of Hosts, my King and my God.

Musical notation for the fourth line of the organ score. It consists of two staves: a treble clef staff and a bass clef staff. The treble staff contains a melody of quarter notes: G4, A4, B4, C5, B4, A4, G4. The bass staff contains a accompaniment of quarter notes: G3, B2, C3, D3, E3, F3, G3. The piece is in 4/4 time and begins with a key signature of one flat (Bb).



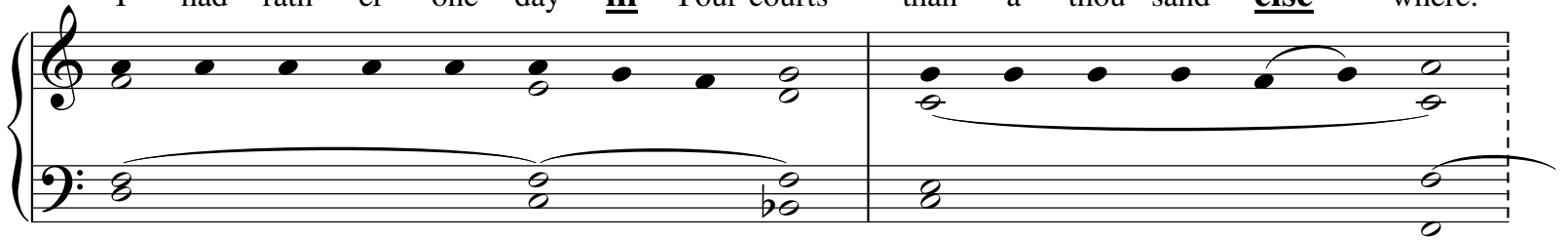
2

Bles - sēd they who dwell in Your house!



3

I had rath - er one day in Your courts than a thou - sand else - where.



I had rath - er lie at the thresh - old of the house of MY God than dwell in the tents of the wick - ēd.

